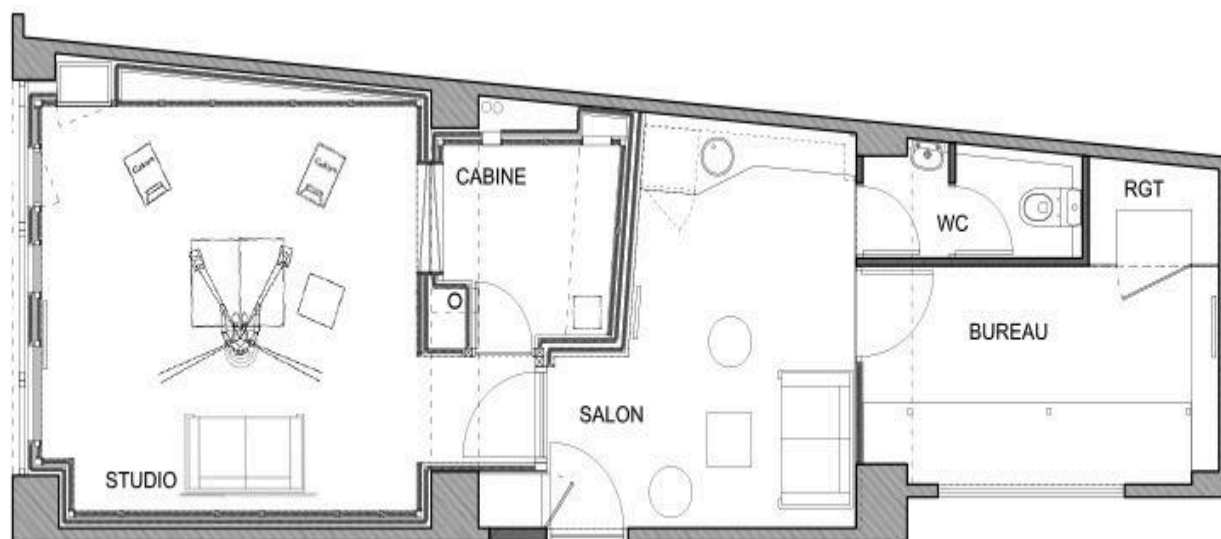


LES STUDIOS ENTREPRISE – STUDIO B



Dimensions :

Control Room: 6m x 4,50m x 3m

Cabine : 3,3 m²

Living Room: 10,4 m²

Equipments

MONITORING

Speakers

- Focal TRI06 be (x2)
- Focal Sub One

Monitoring system

- Dangerous Music Monitor ST + Remote

Headphones/Cue System

- Cue System SM Pro Audio HP6E (class A) (x4)
- Sennheiser HD25 (x2)

MULTITRACK SYSTEM

DAW

- Pro Tools
- Logic X
- Ableton 11/12

System

- Mac Studio M1 Max 64GB/1TB

Audio Interface

- UAD Apollo x16

SOFTWARE

- Waves Classic Collection
- Soundtoys Bundle
- FabFilter Total Bundle
- Valhalla DSP Bundle

HARDWARE

Microphone

- Neumann U87 Vintage
- Other microphones on the technical's rider of studio A and C

Preamp

- LA 610 MKII Universal Audio (x2)

Master

- Rupert Neve Designs Master Bus Transformer

Recorder

- AKAI MG614 (*6 Channel Mixer / 4 Track Cassette Recorder*)
- TASCAM MS-16 1"16 (*Track Reel to Reel Tape Recorder*)

Effect

- Roland RE-201
- BigSky Multidimensional Reverberator
- Boss CE-1 Chorus Ensemble (1979)
- MXR MX-107 Phase 100 Vintage

INSTRUMENTS

Keyboards/Synthesizer

- Gleeman Pentaphonic
- Roland Juno 60
- Oberheim OBX8
- UDO Audio Super 6
- Mellotron M4000D Mini
- Korg M500 Micro-Preset
- Vintage Mono Synth
- Korg miniKORG 700 FS
- Moog Minimoog Model D 2022 (USA)
- Moog Matriarch
- Sequential Prophet 5
- ARP Solina Ensemble
- Sequential Circuits Drumtraks
- Roland TR-606 Drumatix
- Electro-Harmonix DRM16

Acoustic Guitars

- Cort AJ860
- Martin GPC-11E
- Takamine E30

Electric Guitars

- Fender Bass Precision
- Fender Stratocaster 62, Reissue 2010
- Ibanez 2380 Les Paul Recording 1970's
- Schecter Tempest Custom Les Paul Type

Drum Machines/Samplers

- Akai S900 MIDI Digital Sampler
- Analog Drum Machine